

Top PIANO IN LAMINATO POST-FORMATO

L - Pos Post-formed laminate working top



Profondità / Depth = 60/75 cm

40 mm

CARATTERISTICHE / TECHNICAL FEATURES

USO:

GENERICO

LABORATORIO:

FISICA - DIDATTICO - SCIENZE - STRUMENTALE

COLORE:

STANDARD GRIGIO CHIARO - ALTRI COLORI A RICHIESTA

VASCHE APPLICABILI:

POLIPROPILENE - INOX

BORDO DI CONTENIMENTO:

NO

VANTAGGI:

DIMENSIONI - PLANARITA' - EVENTUALI ESECUZIONI A MISURA

LIMITAZIONI:

ACIDI - SOLVENTI - ZONE AD ELEVATA UMIDITA'

USE:

General

LABORATORY:

Physics - Educational - Sciences - Instrumental

COLOUR:

Light Grey - Other colors on request

Available sinks:

Polypropylene - Inox

Containment edges:

No

ADVANTAGES:

Dimensions - Planarity - Any customized executions

NOT ADVISED FOR:

Acids - Solvents - High humidity areas

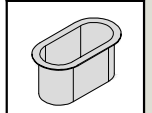
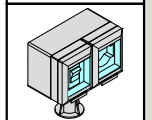
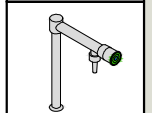
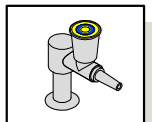
PIANI DI LAVORO
Work tops

MA90

MA95

Accessori

Accessories:

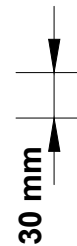


Top PIANO IN LAMINATO PROGRAM

L - Pro Laminate working top



Profondità / Depth = 60/75 cm



30 mm

CARATTERISTICHE / TECHNICAL FEATURES

USO:

GENERICO

LABORATORIO:

FISICA - DIDATTICO - SCIENZE - STRUMENTALE

COLORE:

STANDARD GRIGIO CHIARO - ALTRI COLORI A RICHIESTA

VASCHE APPLICABILI:

POLIPROPILENE - INOX

BORDO DI CONTENIMENTO:

NO

PREGI:

DIMENSIONI - PLANARITA' - EVENTUALI ESECUZIONI A MISURA

LIMITAZIONI:

ACIDI - SOLVENTI - ZONE AD ELEVATA UMIDITA'

USE:

General

LABORATORY:

Physics - Educational - Sciences - Instrumental

COLOUR:

Light Grey - Other colors on request

Available sinks:

Polypropylene - Inox

Containment edges:

No

ADVANTAGES:

Dimensions - Planarity - Any customized executions

NOT ADVISED FOR:

Acids - Solvents - High humidity areas

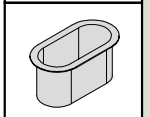
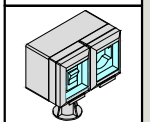
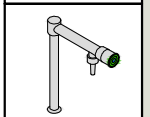
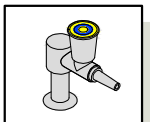
PIANI DI LAVORO
Work tops

MA90

MA95

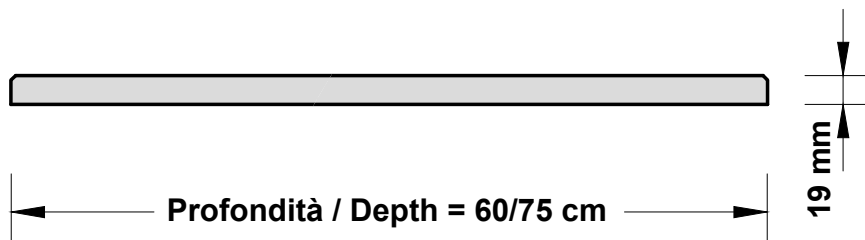
Accessori

Accessories:



Top PIANO IN LAMINATO STRATIFICATO

L - Str Compact stratified laminate working top



CARATTERISTICHE / TECHNICAL FEATURES

USO:
GENERICO

LABORATORIO:
FISICA - DIDATTICO - MICROBIOLOGIA - STRUMENTALE

COLORE:
STANDARD GRIGIO CHIARO - ALTRI COLORI A RICHIESTA

VASCHE APPLICABILI:
POLIPROPILENE - GRES - INOX

BORDO DI CONTENIMENTO:
NO

PREGI:
**RESISTENZA UMIDITA' - DISCRETA RESISTENZA CHIMICA
RESISTENZA AGLI URTI - PLANARITA' - FACILE SANIFICAZIONE
EVENTUALI ESECUZIONI A MISURA**

LIMITAZIONI:
ACIDI CONCENTRATI

USE:
General

LABORATORY:
Physics - Educational - Microbiology - Instrumental

COLOUR:
Light Grey - Other colors on request

Available sinks:
Polypropylene - Gres - Inox

Containment edges:
No

ADVANTAGES:
**Resistance to humidity, fair resistance to chemicals,
impact resistance, planarity, any customized
executions**

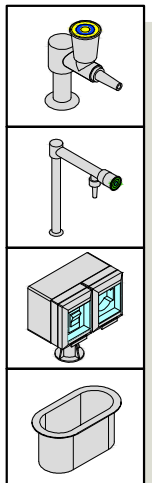
NOT ADVISED FOR:
Concentrated acids

PIANI DI LAVORO
Work tops

MA90

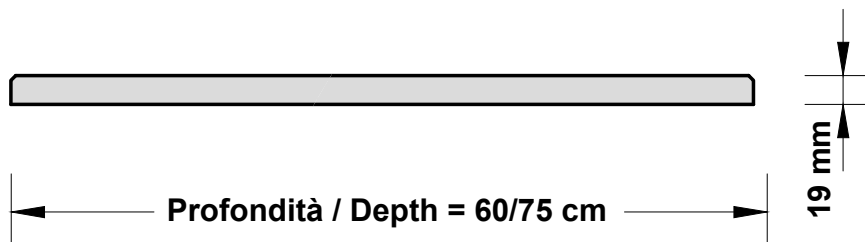
MA95

Accessori
Accessories:



Top PIANO ACCIAIO INOX AISI 304 senza bordo

Inox 304 AISI 304 steel working top without edges



CARATTERISTICHE / TECHNICAL FEATURES

USO:
CHIMICO

LABORATORIO:
CHIMICA - OSPEDALIERO - PETROLCHIMICO - FARMACEUTICO

COLORE:

VASCHE APPLICABILI:
INOX

BORDO DI CONTENIMENTO:
NO

PREGI:
**RESISTENZA UMIDITA' - RESISTENZA AGLI IDROCARBURI
FACILE SANIFICAZIONE - EVENTUALI ESECUZIONI A MISURA**

LIMITAZIONI:
CLORURATI - ACIDI CONCENTRATI

USE:
Chemical

LABORATORY:
Chemical - Hospital - Petrochemical - Pharmaceutical

COLOUR:

Available sinks:
Inox

Containment edges:
No

ADVANTAGES:
**Resistance to humidity - Resistance to hydrocarbons - Easy sanitization
Any customized executions**

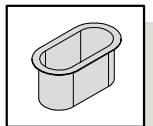
NOT ADVISED FOR:
Chlorinated - Concentrated acids

PIANI DI LAVORO
Work tops

MA90

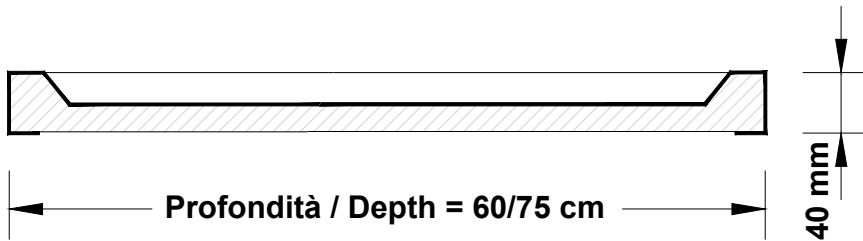
MA95

Accessori
Accessories:



Top PIANO ACCIAIO INOX AISI 304

Inox 304 B Steel working top AISI 304



CARATTERISTICHE / TECHNICAL FEATURES

USO:
CHIMICO

LABORATORIO:
CHIMICA - OSPEDALIERO - PETROLCHIMICO - FARMACEUTICO

COLORE:

VASCHE APPLICABILI:
INOX

BORDO DI CONTENIMENTO:
SI

PREGI:
**RESISTENZA UMIDITA' - RESISTENZA AGLI IDROCARBURI
FACILE SANIFICAZIONE - EVENTUALI ESECUZIONI A MISURA**

LIMITAZIONI:
CLORURATI - ACIDI CONCENTRATI

USE:
Chemical

LABORATORY:
Chemical - Hospital - Petrochemical - Pharmaceutical

COLOUR:

Available sinks:
Inox

Containment edges:
Yes

ADVANTAGES:
**Resistance to humidity - Resistance to hydrocarbons - Easy sanitization
Any customized executions**

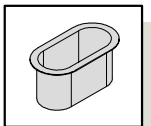
NOT ADVISED FOR:
Chlorinated - Concentrated acids

PIANI DI LAVORO
Work tops

MA90

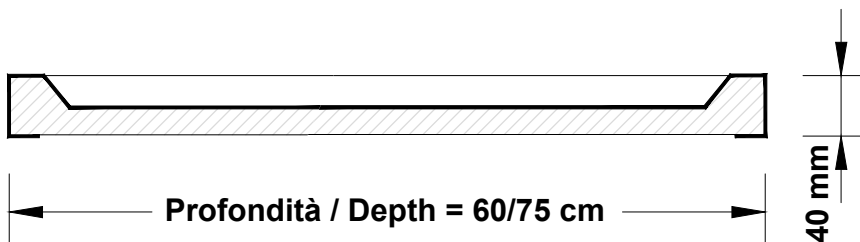
MA95

Accessori
Accessories:



Top PIANO ACCIAIO INOX AISI 316

Inox 316 B Steel working top AISI 304



CARATTERISTICHE / TECHNICAL FEATURES

USO:
CHIMICO

LABORATORIO:
CHIMICA - OSPEDALIERO - PETROLCHIMICO - FARMACEUTICO

COLORE:

VASCHE APPLICABILI:
INOX

BORDO DI CONTENIMENTO:
SI

PREGI:
**RESISTENZA UMIDITA' - RESISTENZA AGLI IDROCARBURI
FACILE SANIFICAZIONE - EVENTUALI ESECUZIONI A MISURA**

LIMITAZIONI:
CLORURATI - ACIDI CONCENTRATI

USE:
Chemical

LABORATORY:
Chemical - Hospital - Petrochemical - Pharmaceutical

COLOUR:

Available sinks:
Inox

Containment edges:
Yes

ADVANTAGES:
**Resistance to humidity - Resistance to hydrocarbons - Easy sanitization
Any customized executions**

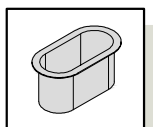
NOT ADVISED FOR:
Chlorinated - Concentrated acids

PIANI DI LAVORO
Work tops

MA90

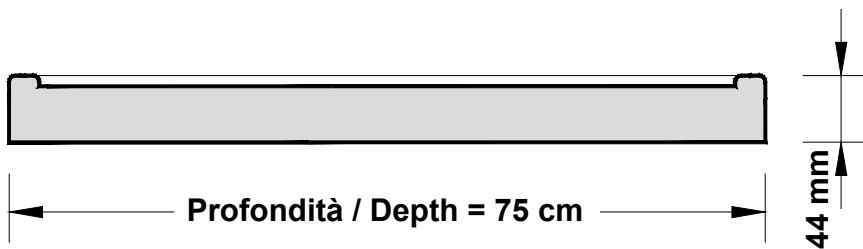
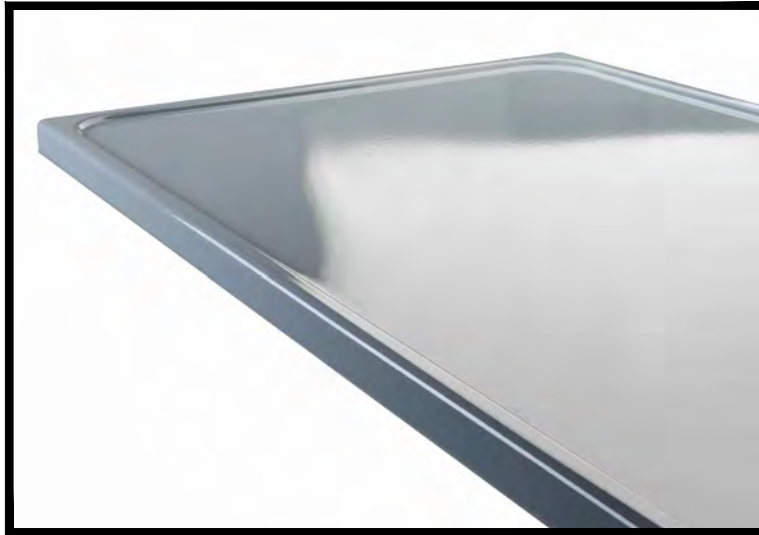
MA95

Accessori
Accessories:



Top PIANO ACCIAIO PORCELLANATO

Cer Ceramicsteel top

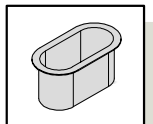


PIANI DI LAVORO
Work tops

MA90

MA95

Accessori
Accessories:



CARATTERISTICHE / TECHNICAL FEATURES

USO:

CHIMICO

LABORATORIO:

CHIMICA - MICROBIOLOGIA - OSPEDALIERO

COLORE:

GRIGIO CHIARO

VASCHE APPLICABILI:

BORDO DI CONTENIMENTO:

SI

PREGI:

RESISTENZA UMIDITA' - BUONA RESISTENZA AGLI ACIDI E SOLVENTI - FACILE SANIFICAZIONE

LIMITAZIONI:

DIMENSIONI - URTI

USE:

Chemical

LABORATORY:

Chemical - Microbiology - Hospital

COLOUR:

Light grey

Available sinks:

Containment edges:

Yes

ADVANTAGES:

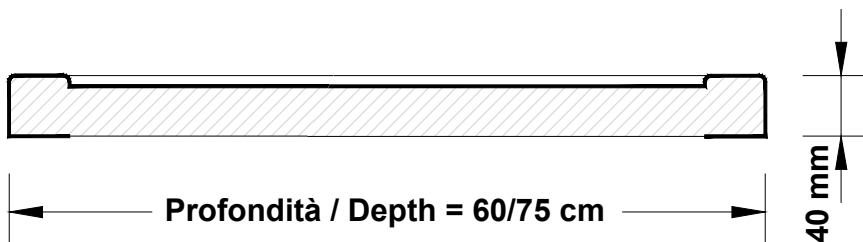
**Resistance to humidity - Good resistance to acids and solvents
Easy sanitization**

NOT ADVISED FOR:

Size range - Poor impact resistance

Top PIANO POLIPROPILENE BIANCO

Pol White polypropylene working top



CARATTERISTICHE / TECHNICAL FEATURES

USO:
CHIMICO

LABORATORIO:
CHIMICA - AREE DI LAVAGGIO

COLORE:
BIANCO

VASCHE APPLICABILI:
Polipropilene

BORDO DI CONTENIMENTO:
SI

PREGI:
RESISTENZA UMIDITA' - OTTIMA RESISTENZA AGLI ACIDI

LIMITAZIONI:
Temperatura > 80° C - Coloranti

USE:
Chemical

LABORATORY:
Chemical - Washing areas

COLOUR:
Light grey

Available sinks:
Polypropylene

Containment edges:
Yes

ADVANTAGES:
Resistance to humidity - Excellent resistance to acids

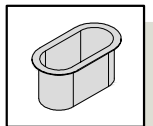
NOT ADVISED FOR:
Temperature > 80° C - Colorants

PIANI DI LAVORO
Work tops

MA90

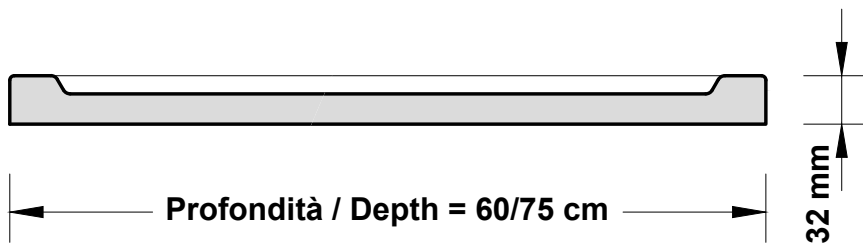
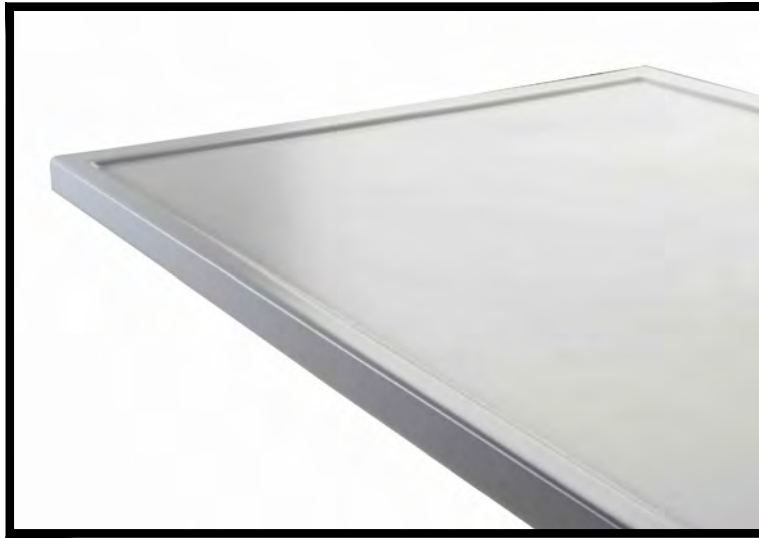
MA95

Accessori
Accessories:



Top PIANO GRES MONOLITICO

Mon Monolithic gres working top



CARATTERISTICHE / TECHNICAL FEATURES

USO:

CHIMICO

LABORATORIO:

CHIMICO - MICROBIOLOGIA - OSPEDALIERO

COLORE:

STANDARD GRIGIO CHIARO - ALTRI COLORI A RICHIESTA

VASCHE APPLICABILI:

GRES - POLIPROPILENE

BORDO DI CONTENIMENTO:

SI / NO

PREGI:

RESISTENZA UMIDITA' - OTTIMA RESISTENZA AGLI ACIDI E SOLVENTI

LIMITAZIONI:

ACIDO FLUORIDRICO - TOLLERANZA NELLA PLANARITA'

USE:

Chemical

LABORATORY:

Chemical - Microbiology - Hospital

COLOUR:

Light Grey - Other colors on request

Available sinks:

Gres - Polypropylene

Containment edges:

Yes / No

ADVANTAGES:

Resistance to humidity - Excellent resistance to acid and solvent

NOT ADVISED FOR:

Fluoridric acid - Tolerance in the planarity

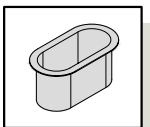
PIANI DI LAVORO
Work tops

MA90

MA95

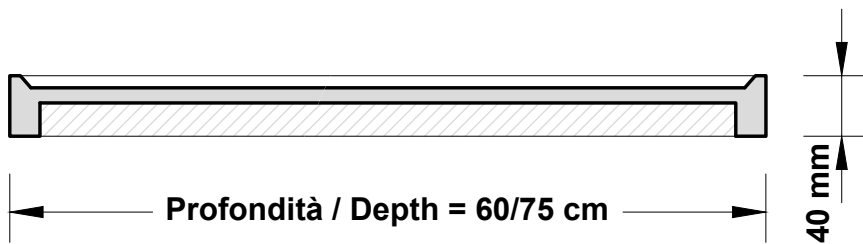
Accessori

Accessories:



Top PIANO IN CORIAN®

Cor Top in Corian®



CARATTERISTICHE / TECHNICAL FEATURES

USO:
CHIMICO

LABORATORIO:
CHIMICO - MICROBIOLOGIA - OSPEDALIERO - FARMACEUTICO

COLORE:
BIANCO

VASCHE APPLICABILI:
CORIAN

BORDO DI CONTENIMENTO:
SI / NO

PREGI:
**RESISTENZA UMIDITA' - DISCRETA RESISTENZA AGLI ACIDI
EVENTUALI ESECUZIONI A MISURA**

LIMITAZIONI:
ACIDI CONCENTRATI - COLORANTI

USE:
Chemical

LABORATORY:
Chemical - Microbiology - Hospital - Pharmaceutical

COLOUR:
White

Available sinks:
Corian

Containment edges:
Yes / No

ADVANTAGES:
**Resistance to humidity - Moderate resistance to acids - Any customized
executions**

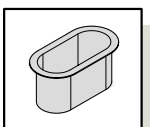
NOT ADVISED FOR:
Concentrated acids - Colorants

PIANI DI LAVORO
Work tops

MA90

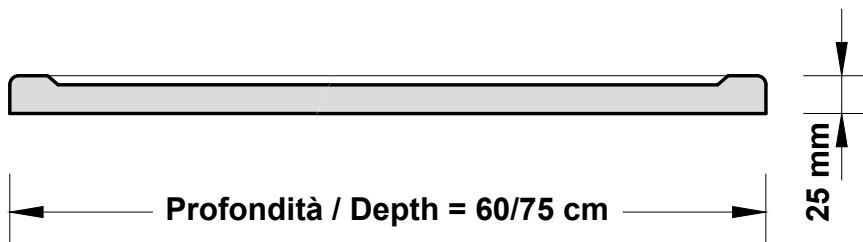
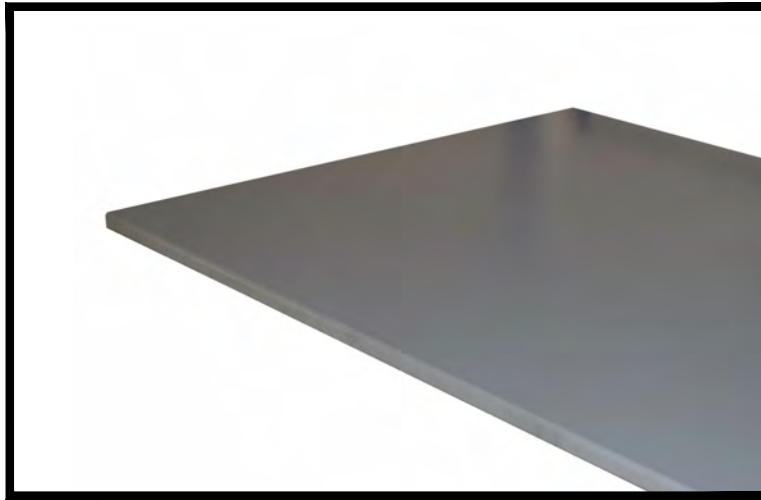
MA95

Accessori
Accessories:



Top PIANO IN RESINA EPOSSIDICA (DURCON®)

Dur Working top in epoxy resin (Durcon®)



CARATTERISTICHE / TECHNICAL FEATURES

USO:

CHIMICO

LABORATORIO:

CHIMICO - MICROBIOLOGIA - OSPEDALIERO

COLORE:

GRIGIO SCURO

VASCHE APPLICABILI:

POLIPROPILENE

BORDO DI CONTENIMENTO:

SI / NO

PREGI:

**RESISTENZA UMIDITA' - DISCRETA RESISTENZA AGLI ACIDI
FACILITE SANIFICAZIONE**

LIMITAZIONI:

ACIDI CONCENTRATI - ACIDO FLUORIDRICO - SOLVENTI

USE:

Chemical

LABORATORY:

Chemical - Microbiology - Hospital

COLOUR:

Dark Grey

Available sinks:

Polypropylene

Containment edges:

Yes / No

ADVANTAGES:

Resistance to humidity - Moderate resistance to acids - Easy sanitization

NOT ADVISED FOR:

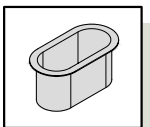
Concentrated acids - Fluoridric acid - Solvents

PIANI DI LAVORO
Work tops

MA90

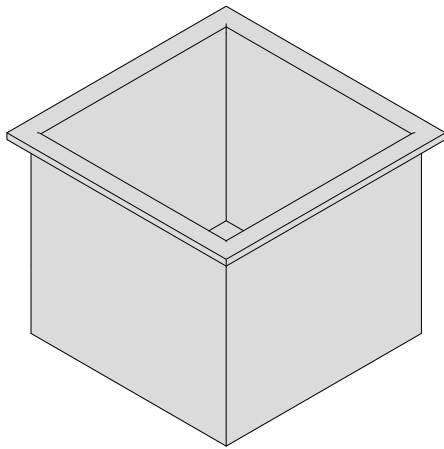
MA95

Accessori
Accessories:



Vas **VASCHE DA INCASSO**

Built-in sinks



VASCHE INOX AISI 304

Inox AISI 304 sinks

MA907501

Dimensioni interne | $\varnothing 14 \times p \varnothing 14 \times h 15$
Internal dimensions | $\varnothing 14 \times p \varnothing 14 \times h 15$

MA907502

Dimensioni interne | $23 \times p 33 \times h 20$
Internal dimensions | $23 \times p 33 \times h 20$

MA907503

Dimensioni interne | $33 \times p 33 \times h 20$
Internal dimensions | $30 \times p 30 \times h 20$

MA907504

Dimensioni interne | $40 \times p 40 \times h 20$
Internal dimensions | $40 \times p 40 \times h 20$

MA907505

Dimensioni interne | $40 \times p 40 \times h 30$
Internal dimensions | $40 \times p 40 \times h 30$

MA907506

Dimensioni interne | $50 \times p 40 \times h 30$
Internal dimensions | $50 \times p 40 \times h 30$

VASCHE IN POLIPROPILENE

Polypropylene sinks

MA907507

Dimensioni interne | $25 \times p 10 \times h 20$
Internal dimensions | $25 \times p 10 \times h 20$

MA907508

Dimensioni interne | $30 \times p 30 \times h 20$
Internal dimensions | $30 \times p 30 \times h 20$

MA907509

Dimensioni interne | $40 \times p 40 \times h 30$
Internal dimensions | $40 \times p 40 \times h 30$

MA907510

Dimensioni interne | $50 \times p 40 \times h 30$
Internal dimensions | $50 \times p 40 \times h 30$

VASCHE IN GRES MONOLITICO

Monolithic gres sinks

MA907512

Dimensioni interne | $\varnothing 11 \times p \varnothing 11 \times h 11$
Internal dimensions | $\varnothing 11 \times p \varnothing 11 \times h 11$

MA907513

Dimensioni interne | $25,5 \times p 11,5 \times h 10$
Internal dimensions | $25,5 \times p 11,5 \times h 10$

MA907514

Dimensioni interne | $24,6 \times p 10 \times h 10,5$
Internal dimensions | $24,6 \times p 10 \times h 10,5$

MA907515

Dimensioni interne | $24,8 \times p 24,8 \times h 17$
Internal dimensions | $24,8 \times p 24,8 \times h 17$

MA907516

Dimensioni interne | $34,5 \times p 34,5 \times h 31$
Internal dimensions | $34,5 \times p 34,5 \times h 31$

MA907517

Dimensioni interne | $39,2 \times p 39,2 \times h 31$
Internal dimensions | $39,2 \times p 39,2 \times h 31$

MA907518

Dimensioni interne | $34,5 \times p 44,5 \times h 31$
Internal dimensions | $34,5 \times p 44,5 \times h 31$

MA907519

Dimensioni interne | $39 \times p 48,5 \times h 31$
Internal dimensions | $39 \times p 48,5 \times h 31$

MA907520

Dimensioni interne | $49 \times p 37 \times h 23,5$
Internal dimensions | $49 \times p 37 \times h 23,5$

VASCHE RESINA EPOSSIDICA (DURCON)

Sinks in epoxy resin (Durcon)

MA907550

Dimensioni interne | $30 \times p 15 \times h 15$
Internal dimensions | $30 \times p 15 \times h 15$

MA907551

Dimensioni interne | $40 \times p 40 \times h 19$
Internal dimensions | $40 \times p 40 \times h 19$

MA907552

Dimensioni interne | $45 \times p 35 \times h 26$
Internal dimensions | $45 \times p 35 \times h 26$

MA907553

Dimensioni interne | $61 \times p 46 \times h 42$
Internal dimensions | $61 \times p 46 \times h 42$

VASCHE CORIAN BIANCO

Sinks in white Corian

MA907530

Dimensioni interne | $30 \times p 15 \times h 15$
Internal dimensions | $30 \times p 15 \times h 15$

MA907535

Dimensioni interne | $40 \times p 40 \times h 25$
Internal dimensions | $40 \times p 40 \times h 25$

PIANI DI LAVORO
Work tops

MA90

MA95